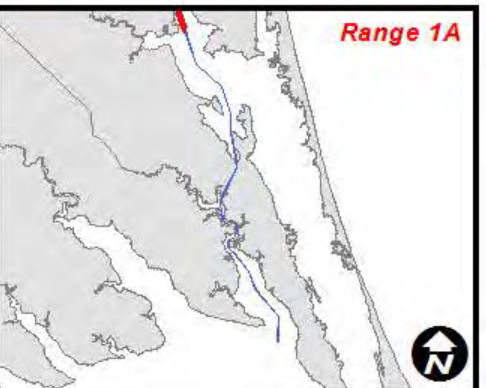
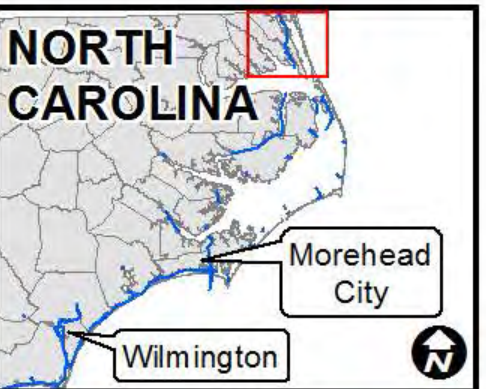




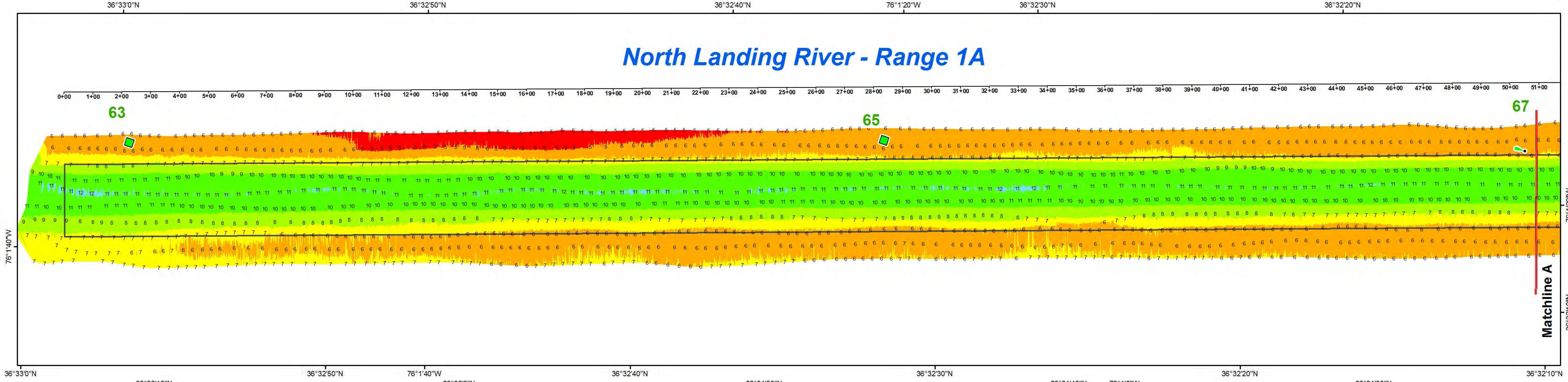
US Army Corps of Engineers  
Wilmington District



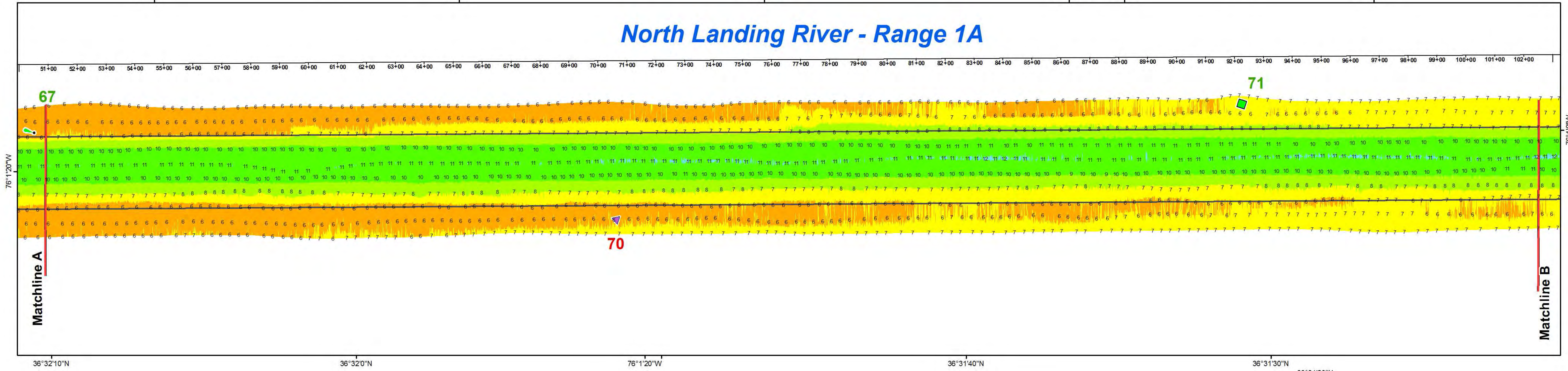
SURVEYED BY: DCH, BRJ	MAP FILE NAME: IA_01_R1A_20180418_CS.MXD
MAPPED BY: KTOPNSMG	
PROCESSED BY: KTOPNSMG	
SURVEY DATE: 18 APRIL 2018	
MAP DATE: 25 APRIL 2018	
MAP SCALE: 1:2,000	

**HYDROGRAPHIC SURVEY**  
 U.S. ARMY ENGINEER DISTRICT  
 CORPS OF ENGINEERS  
 WILMINGTON, NORTH CAROLINA  
**ATLANTIC INTRACOASTAL WATERWAY**  
**North Landing River**  
**Range 1A**  
 NORTH OF COINJOCK, NORTH CAROLINA

# North Landing River - Range 1A



# North Landing River - Range 1A



## LEGEND

### Aids to Navigation Depth In Feet

	Can		4 and Shallower
	Nun		6 - 4
	Green Lighted Buoy		7 - 6
	Red Lighted Buoy		8 - 7
	Junction Marker		10 - 8
	Green Light		12 - 10
	Red Light		14 - 12
	Green Daybeacon		15 - 14
	Red Daybeacon		15 and Deeper
	Danger Sign		Matchlines
	Mileboard		Navigation Channel
	Tide Gage		

NOTES:

- ELEVATIONS ARE IN FEET AND REFER TO NOAA'S REPORTED MEAN LOWER LOW WATER (MLLW) RELATIVE TO THE 1983-2001 TIDAL EPOCH.
- PROJECT SURVEYED WITH DISTRICT SURVEY VESSEL "KNOWLTON", USING RTK GPS HORIZONTAL POSITIONING EQUIPMENT AND 200 KHZ SOUNDING EQUIPMENT.
- HORIZONTAL DATUM NAD 1983. VERTICAL DATUM M.L.L.W.
- TIDE GAGE LOCATED AT: KNOTS ISLAND FERRY TERMINAL (MAINLAND). USE OF TIDE VALUES FOR THIS GAGE ARE RESTRICTED TO QUALITY ASSURANCE PURPOSES FOR VERIFICATION OF RTK TIDES. THE WILMINGTON DISTRICT WILL ONLY USE STAFF GAGE TIDAL VALUES FOR FINAL MAPPING AND QUANTITY CALCULATIONS IF RTK GPS IS UNAVAILABLE AT THE TIME OF SURVEY.
- THIS PROJECT WAS DESIGNED BY THE WILMINGTON DISTRICT OF THE U.S. ARMY CORPS OF ENGINEERS. THE INITIALS AND SIGNATURES AND REGISTRATION DESIGNATIONS OF INDIVIDUALS APPEAR ON THESE PROJECT DOCUMENTS WITHIN THE SCOPE OF THEIR EMPLOYMENT AS REQUIRED BY ER1110-1.8152.
- THE INFORMATION DEPICTED ON THIS SURVEY MAP REPRESENTS THE RESULTS OF SURVEYS MADE ON THE DATES INDICATED AND CAN ONLY BE CONSIDERED AS INDICATING THE GENERAL CONDITIONS EXISTING AT THAT TIME. THESE CONDITIONS ARE SUBJECT TO RAPID CHANGE DUE TO SHOALING EVENTS. A PRUDENT MARINER SHOULD NOT RELY EXCLUSIVELY ON THE INFORMATION PROVIDED HERE, REQUIRED BY 33 CFR 209.325.
- NAVIGATION AIDS LOCATED WITH DISTRICT SURVEY VESSEL, ACCURACY +/- 3 METERS.
- FOR THE MOST UP TO DATE INFORMATION PLEASE CHECK OUR WEBSITE AT: WWW.SAW.USACE.ARMY.MIL

